

YEAR 2022

CORE STATION 1022

ROAD NETWORK MAJOR

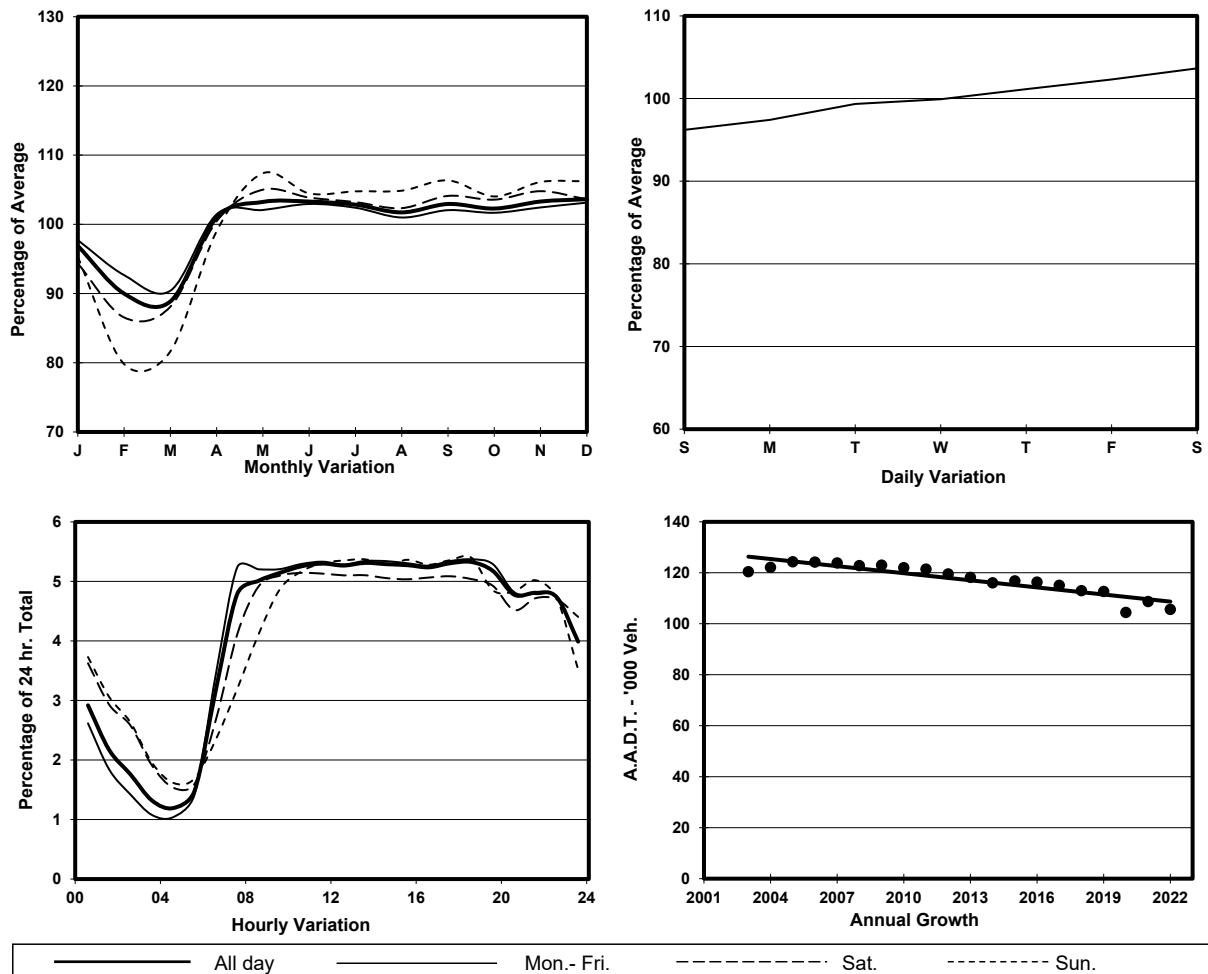
ROAD TYPE URBAN TRUNK ROAD

LINK CROSS HARBOUR TUNNEL (from TOLL PLAZA to SOUTH PORTAL)

6.8m 6.8m

N bound 2 lanes S bound 2 lanes

## 1. TRAFFIC FLOW VARIATION AND GROWTH



## 2. TRAFFIC CHARACTERISTICS (BY DIRECTION)

Parameter	All - Day	Mon. - Fri.	Sat.	Sun.
<b>SOUTH BOUND</b>				
A.A.D.T.	53730	53840	56030	51690
R 12 / 24 - %	62.6	63.5	60.3	60.8
R 16 / 24 - %	81.4	82.4	78.6	79.6
AM Peak Hour	0900-1000	0800-0900	0900-1000	0900-1000
One-way flow at AM peak hour	2860	2900	2960	2670
T - % (AM)	-	9.2	-	-
PM Peak Hour	1800-1900	1800-1900	1700-1800	1800-1900
One-way flow at PM peak hour	2810	2840	2790	2750
T - % (PM)	-	8.1	-	-
Prop.of commercial vehicles - 16 hr.	-	9.2	-	-
<b>NORTH BOUND</b>				
A.A.D.T.	51890	52030	53780	49990
R 12 / 24 - %	62.4	63.6	59.4	59.2
R 16 / 24 - %	82.6	84	78.9	79.3
AM Peak Hour	0900-1000	0700-0800	0900-1000	0900-1000
One-way flow at AM peak hour	2570	2650	2640	2280
T - % (AM)	-	11.1	-	-
PM Peak Hour	1700-1800	1700-1800	1700-1800	1800-1900
One-way flow at PM peak hour	2830	2870	2790	2730
T - % (PM)	-	8.5	-	-
Prop.of commercial vehicles - 16 hr.	-	10.5	-	-

## 3. OTHER INFORMATION AND COMMENT

**4. Vehicle classification and occupancy - Monday to Friday**

Time		Class of vehicle									
		Motor Cycle	Private Car	Taxi	Private LB	PLB	Goods veh.		Non Fr. Bus	Fr. Bus	
							Light	M & H		SD	DD
0700-0800	Pro	7.9	54.1	7.9	2.4	0.7	17.0	3.5	2.0	0.0	4.6
	Ocp	1.1	1.2	1.9	9.6	9.6	1.4	1.2	10.3	0.0	40.5
0800-0900	Pro	8.2	53.8	4.3	0.4	0.4	20.2	4.7	1.2	0.1	6.8
	Ocp	1.1	1.2	1.9	2.0	10.8	1.4	1.4	6.3	1.0	37.6
0900-1000	Pro	4.8	43.8	7.9	0.6	0.1	30.2	4.3	1.7	0.1	6.6
	Ocp	1.1	1.2	1.9	1.4	1.0	1.4	1.3	1.1	2.0	23.2
1000-1100	Pro	4.0	39.1	9.1	0.3	0.2	34.6	6.5	1.5	0.1	4.6
	Ocp	1.1	1.3	1.9	1.5	1.0	1.4	1.2	4.8	1.0	23.1
1100-1200	Pro	3.8	39.8	9.1	0.9	0.0	35.6	5.4	1.3	0.1	4.0
	Ocp	1.0	1.3	1.9	1.7	0.0	1.3	1.2	4.2	2.0	28.3
1200-1300	Pro	3.6	43.4	10.1	0.9	0.1	31.8	4.7	1.5	0.0	3.9
	Ocp	1.1	1.4	1.9	2.3	1.0	1.3	1.2	4.1	0.0	29.2
1300-1400	Pro	3.8	45.0	8.3	1.8	0.0	29.1	7.3	1.5	0.0	3.4
	Ocp	1.0	1.3	1.9	9.0	0.0	1.3	1.3	10.4	0.0	34.9
1400-1500	Pro	2.8	46.8	9.3	1.4	0.0	29.9	4.1	2.2	0.0	3.5
	Ocp	1.1	1.4	2.2	1.6	0.0	1.4	1.3	3.9	0.0	35.4
1500-1600	Pro	4.4	49.9	9.1	1.1	0.1	25.2	5.1	1.0	0.0	4.0
	Ocp	1.1	1.3	1.9	5.3	2.0	1.4	1.3	17.9	0.0	31.3
1600-1700	Pro	5.2	52.5	6.9	1.0	0.1	24.3	2.9	2.2	0.0	4.9
	Ocp	1.1	1.3	2.1	2.7	5.5	1.4	1.3	2.9	0.0	30.3
1700-1800	Pro	7.4	55.3	7.5	0.7	0.3	18.7	1.7	1.7	0.0	6.5
	Ocp	1.1	1.3	2.0	1.6	5.0	1.3	1.3	5.5	0.0	38.6
1800-1900 Peak hour	Pro	9.4	63.6	6.2	0.2	0.2	11.9	2.0	0.8	0.0	5.8
	Ocp	1.0	1.3	2.1	1.3	17.0	1.4	1.3	7.4	0.0	52.5
1900-2000	Pro	4.8	64.3	11.8	0.1	0.4	10.6	1.7	0.9	0.0	5.3
	Ocp	1.1	1.2	1.9	3.5	8.2	1.3	1.2	3.8	0.0	34.7
2000-2100	Pro	5.4	52.2	24.5	0.4	1.0	9.7	1.5	0.7	0.0	4.6
	Ocp	1.2	1.3	2.0	1.4	6.0	1.4	1.5	1.2	0.0	29.3
2100-2200	Pro	4.7	51.9	27.6	0.2	0.6	8.2	1.7	0.5	0.0	4.8
	Ocp	1.1	1.5	1.8	1.0	10.7	1.4	1.2	8.0	0.0	28.6
2200-2300	Pro	6.3	52.3	27.3	0.2	0.8	7.5	1.1	0.5	0.0	4.1
	Ocp	1.1	1.4	2.0	1.0	9.0	1.4	1.2	1.5	0.0	27.6
16 hours	Pro	5.4	50.6	11.5	0.8	0.3	21.5	3.6	1.3	0.1	4.9
	Ocp	1.1	1.3	1.9	4.6	8.2	1.4	1.3	5.7	1.6	33.2

**Legend: Pro.** Proportion of vehicles in % (Sum may not add up to 100% due to figure rounding)\*

**Ocp.** Average occupancy of vehicles including both driver and passengers\*

**M&H** Medium and Heavy

\* All traffic data are collected from combined bounds